

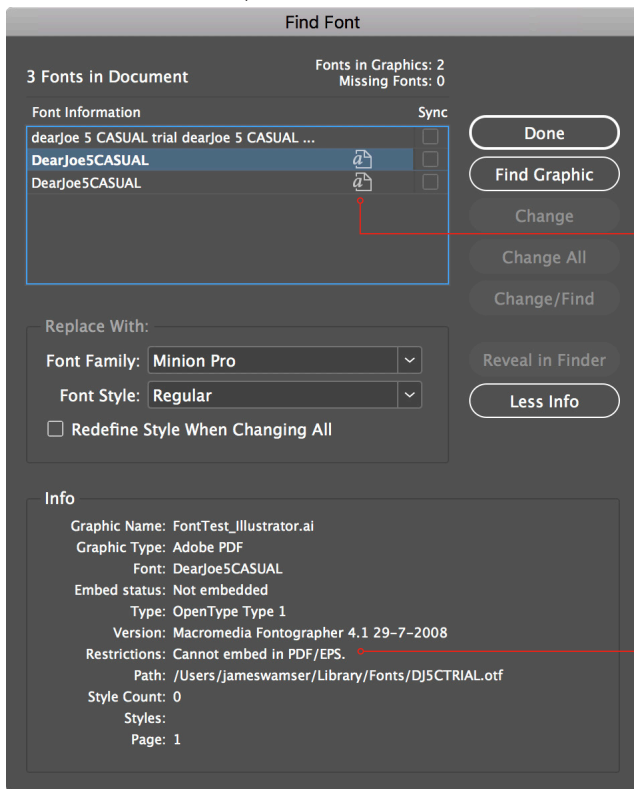
TechLines

Font Restrictions

Certain fonts have restrictions and can't be embedded in a PDF. The following pages will show you how to identify any restrictions and a solution.

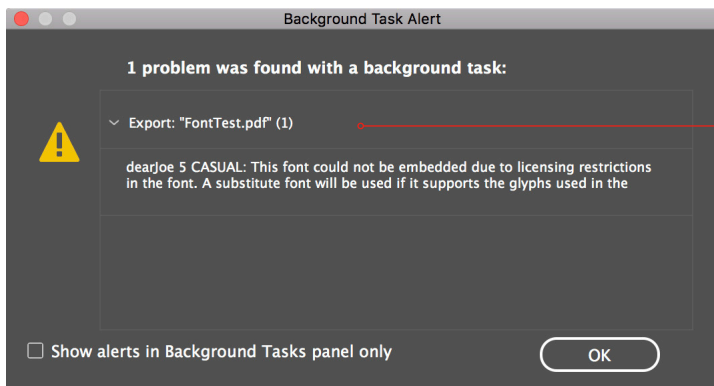
FONT RESTRICTIONS

The Find Font (Type > Find Font) dialog box will indicate any Restrictions a font may have including fonts in PDFs, Adobe Illustrator and Adobe Photoshop.



Fonts not embedded in placed PDFs, Adobe Illustrator and Adobe Photoshop (PDF).

Restrictions indicate this font can't be embedded.

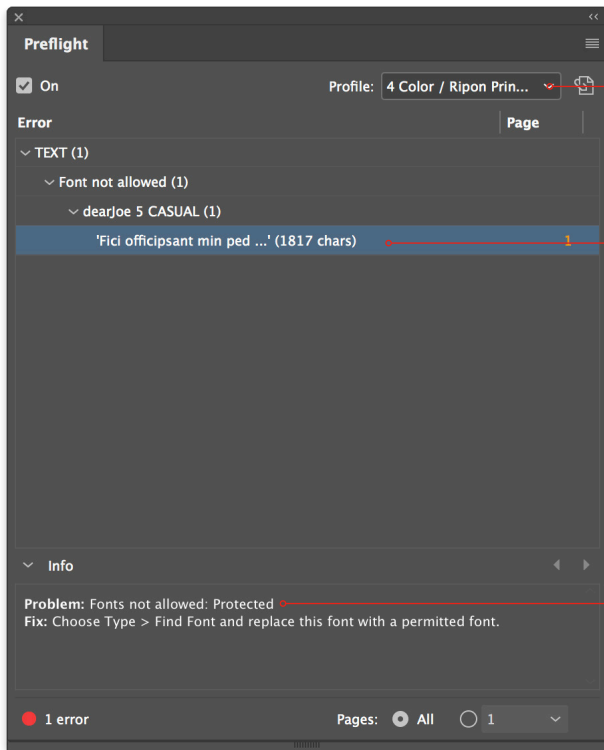


When Exporting a PDF, the Background Task Alert dialog box will indicate if one or more fonts can't be embedded.

INDESIGN PREFLIGHT

Our Preflight Setting will also indicate if a protected font is being used. You can download our Preflight Profile and a TechLine on Preflighting with InDesign from our website.

<https://www.riponprinters.com/support/technical-guides-education-training/>



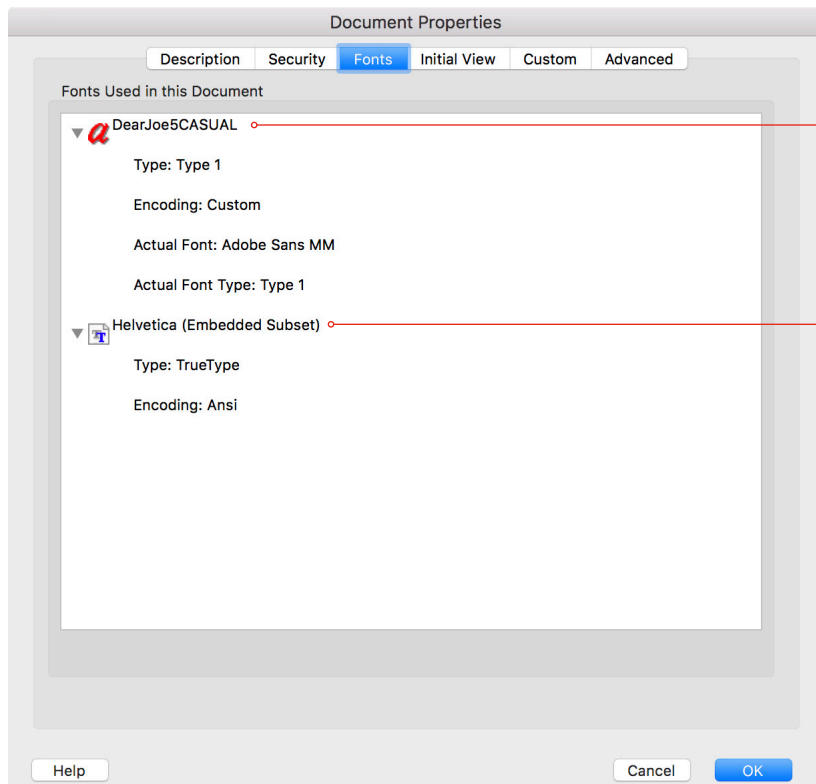
Ripon Printers Preflight Profile

Font is Protected (Can't be embedded)

Font is Protected (Can't be embedded)

ADOBE ACROBAT PRO

There are a couple ways to identify fonts that are not embedded in a PDF using Adobe Acrobat Pro. Open the Properties dialog box (File > Properties) and click on the Font tab.

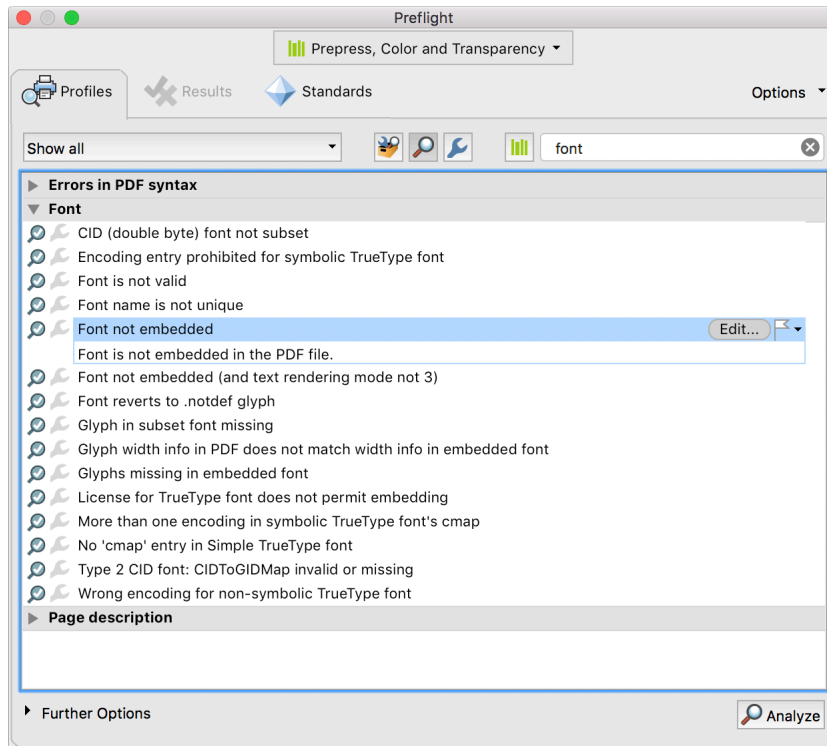


Font is NOT Embedded

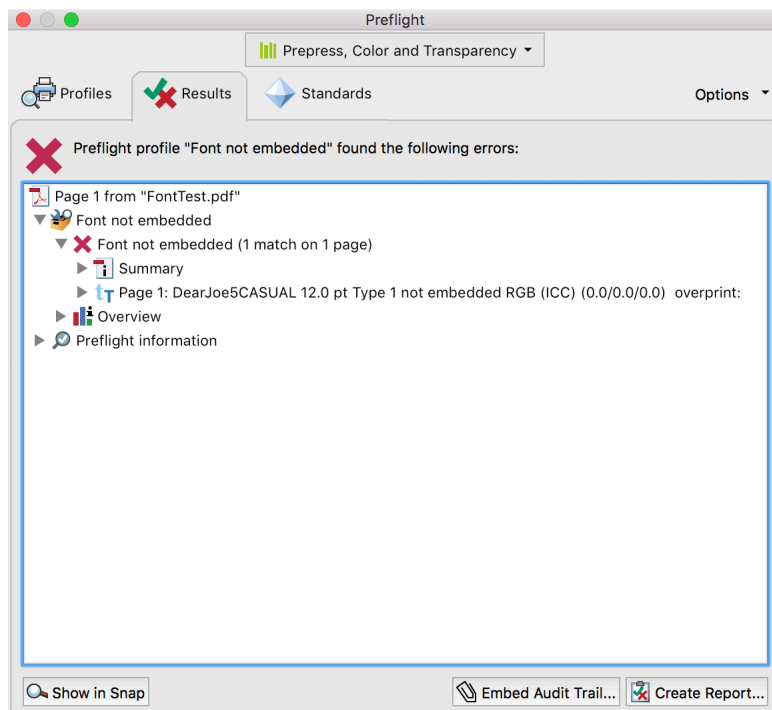
Font is Embedded

ADOBE ACROBAT PRO

You can also use Preflight to determine if one or more fonts are not embedded. Open the Preflight Panel (Print Production) and click on Font not embedded, then click the Analyze button.



Preflight panel will indicate If one or more fonts are not embedded.



CREATE OUTLINES

Since this font can't be embedded, you have to Create Outlines. Select the text frame and then choose Create Outlines (Type > Create Outlines) **Keep in mind you will no longer be able to edit the type.**

Add Fonts from Typekit...	
Font	▶
Size	▶
Character	⌘T
Paragraph	⇧⌘T
Tabs	⇧⌘T
Glyphs	⇧⌘F11
Story	
Character Styles	⇧⌘F11
Paragraph Styles	⌘F11
Create Outlines	⇧⌘O
Find Font...	
Change Case	▶
Type on a Path	▶
Notes	▶
Track Changes	▶
Insert Footnote	
Document Footnote Options...	
Insert Endnote	
Document Endnote Options...	
Hyperlinks & Cross-References	▶
Text Variables	▶
Bulleted & Numbered Lists	▶
Insert Special Character	▶
Insert White Space	▶
Insert Break Character	▶
Fill with Placeholder Text	
Show Hidden Characters	⇧⌘I



656 S. Douglas Street
Ripon, WI 54971-0006
(800) 321-3136
(920) 748-3136
riponprinters.com

Milwaukee office
16000 W Rogers Drive
Suite 200
New Berlin, WI 53151

Indianapolis office
755 W Carmel Drive
Suite 209
Carmel, IN 46032