

TechLines

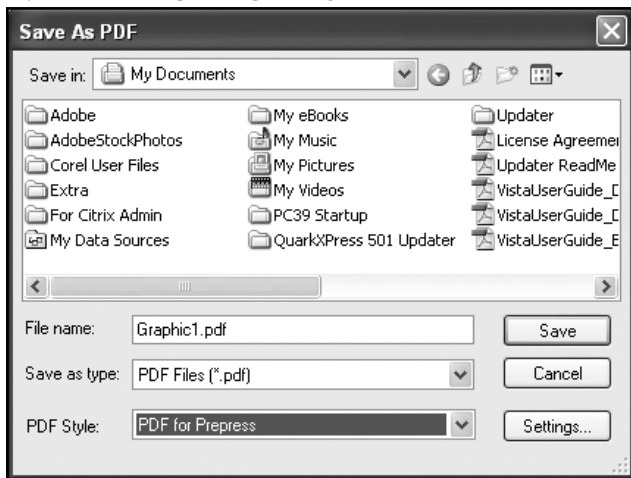
Technical Information Sheet

Revised: May 21, 2007

Exporting PDF from CorelDraw

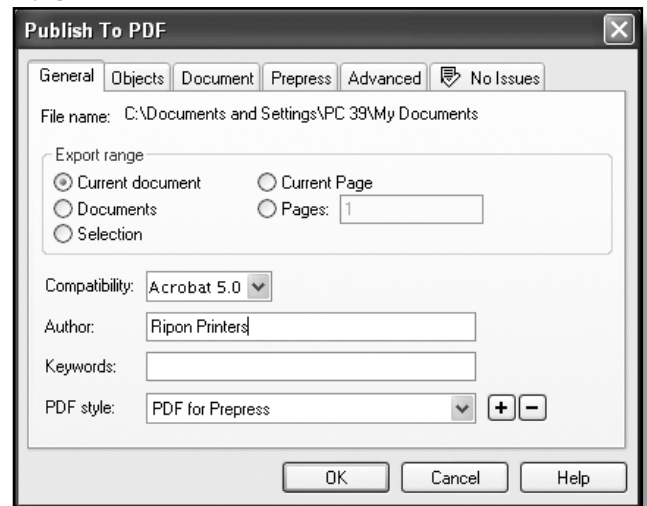
These are the settings that have proven successful for exporting a PDF file out of CorelDRAW here at Ripon Printers. In some instances even using these settings may not create a PDF file that processes flawlessly. It is crucial that you check the PDF file for any potential printing problems. Here at Ripon Printers we use PDF preflighting tools to check the PDF file for potential problems. We recommend that our customers use Enfocus PitStop to check the file. Please contact Jason Hauman, our Customer Education Specialist for a set of PitStop profiles that you can use for checking your files.

1. FILE > PUBLISH TO PDF



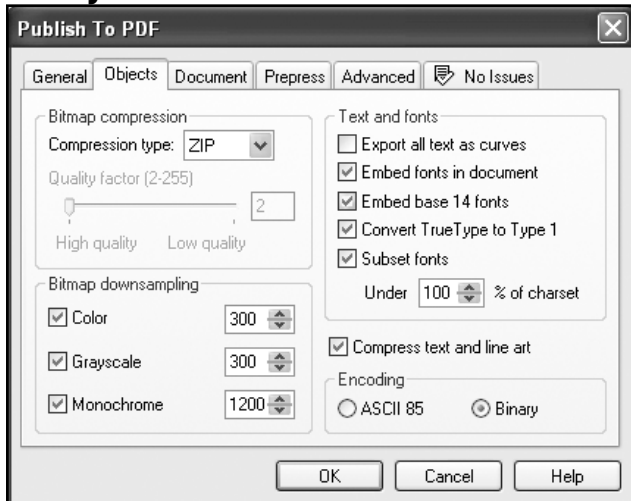
Choose **File/Publish to PDF**. Be sure to specify a file name and location for saving the file to.

2. GENERAL



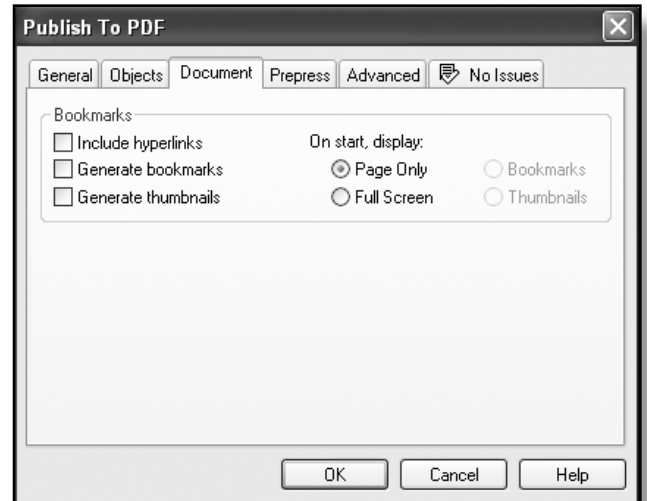
Under **Compatibility** pull-down menu choose **Acrobat 5.0**.

3. OBJECTS



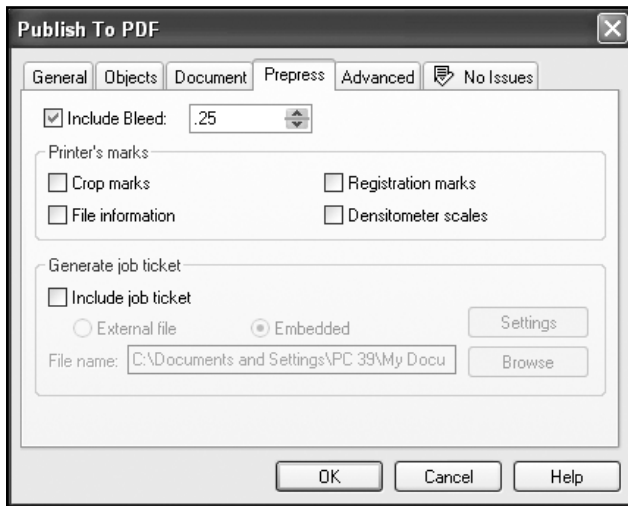
These are the settings that should be set under the Objects tab.

4. DOCUMENT



These are the settings that should be set under the Document tab.

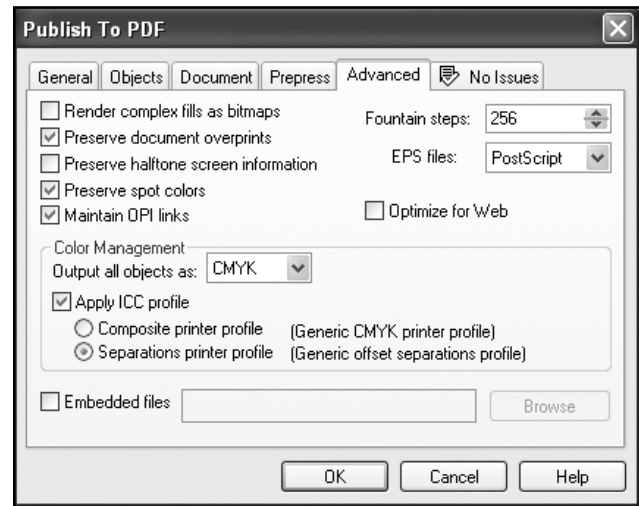
5. PREPRESS



Be sure to include **.25" of bleed**.

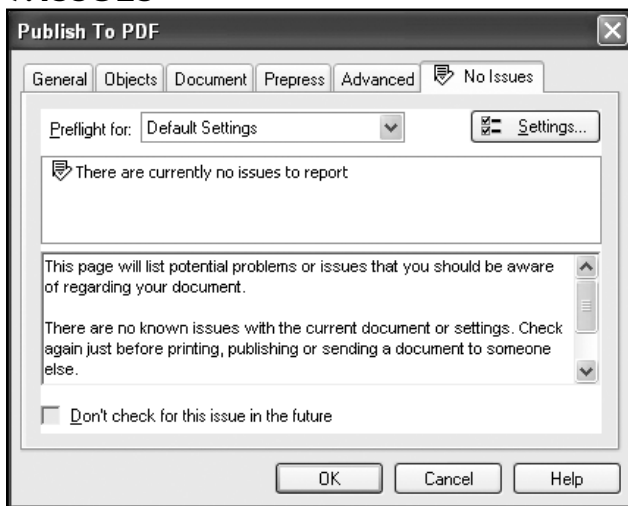
NOTE: If you don't build your pages at final trim size and we need to reduce your pages you will need even more bleed. This is because as your pages are reduced the bleed will shrink along with the rest of the page elements.

6. ADVANCED



These are the settings that should be set under the Advanced tab. Be sure to set the appropriate color for your project. Choose Grayscale for black and white pages. Choose CMYK for four color pages or spot color pages. Spot colors will still come out as spot when selecting this as long as the colors are set up correctly in the document.

7. ISSUES



This last tab will show you any issues that CorelDRAW may flag as potential problems. These settings need to be specified under the settings button of this window.