



# Rampage Remote

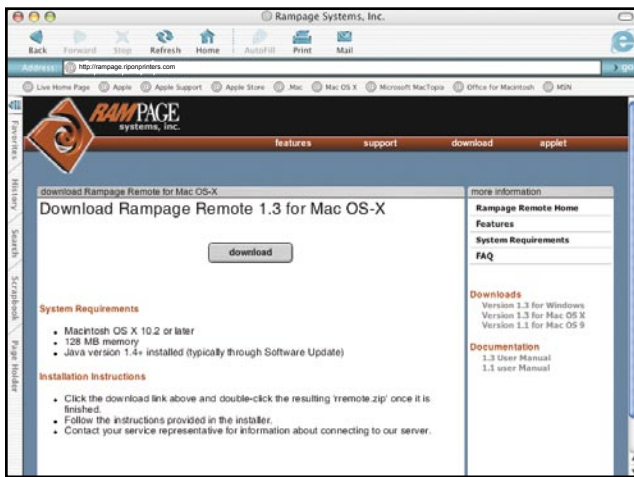
## Quick Start - Customer Configuration Instructions

Welcome to the Rampage Remote Proofing system at Ripon Community Printers. The information on this guide is provided as a "Quick Start" for getting set up to view your proofs online.

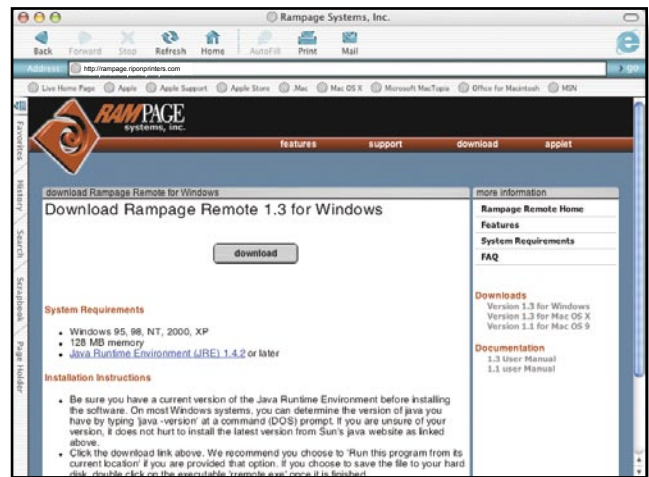
### 1. Downloading the Rampage Remote Proofing Client

First, you must download and install the Rampage Remote Proofing Client to your computer. To download the installer enter the following address into your web browser: <http://rampage.riponprinters.com>.

**NOTE:** Be sure you have the most current version of the Java Runtime Environment before installing the software. For Mac OSX machines you can update the Java plug-in using Mac OSX's Software Update feature. For Windows machines click on the link called "Java Runtime Environment (JRE 1.4.2)" that is on the download page.



Mac OS X Download Screen



Windows Download Screen

### 2. Install the Rampage Remote Proofing Client

Double-click on the Rampage Remote Proofing Client installer and follow the prompts for installing.



rremote

Mac OS X Installer



rremote.exe

Windows Installer

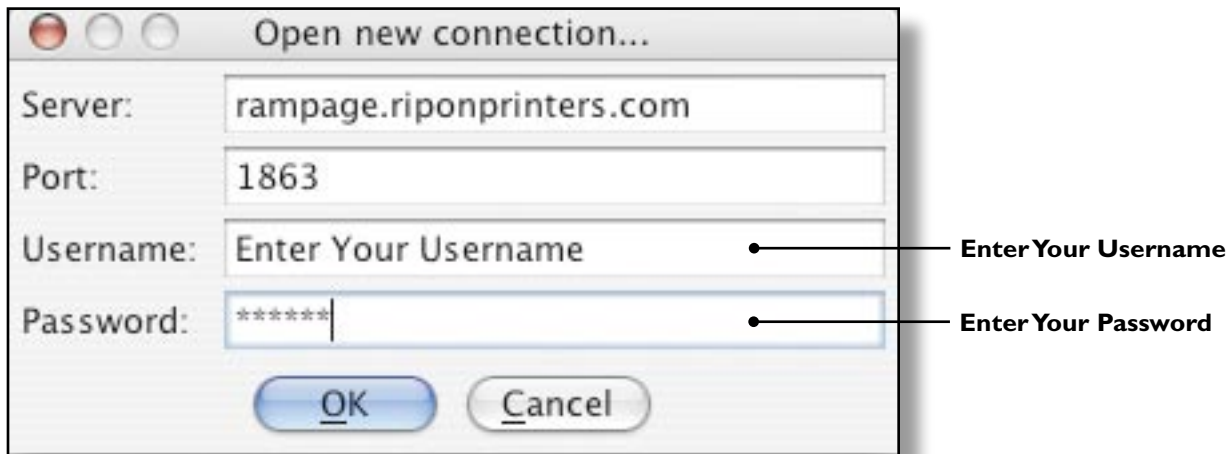
### 3. Accessing Your Rampage Remote Proofs

To access your proofs double-click on the Rampage Remote application that you have installed on your computer.



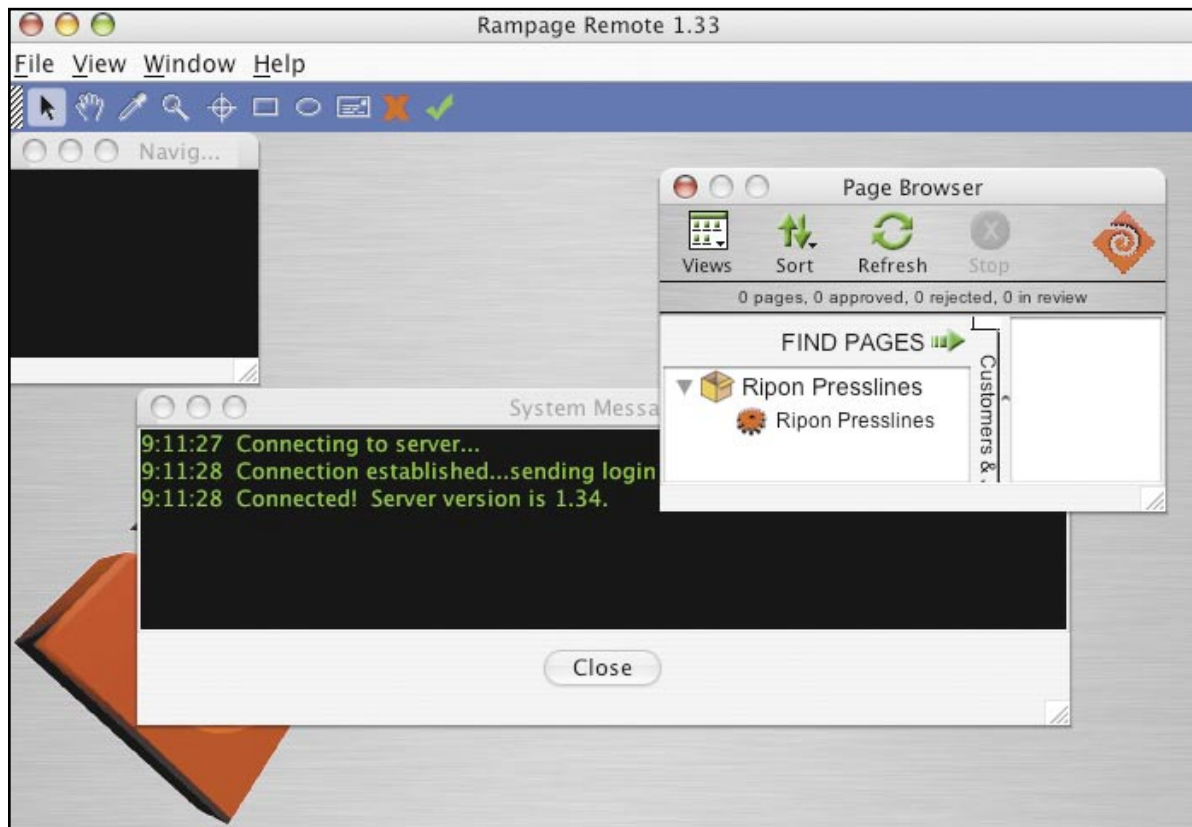
RampageRemote

After double-clicking on the Rampage Remote application icon you will see the following dialogue box appear. You will need to enter your account information into this dialogue box to view your proofs.



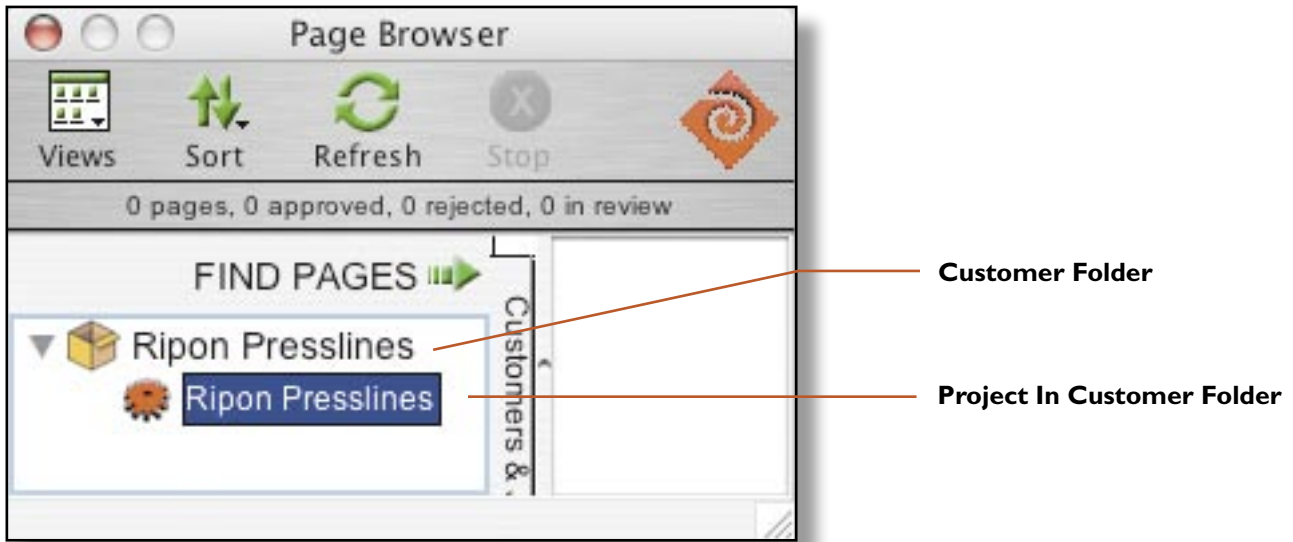
#### 4. Rampage Remote Workspace

The screen below shows what you will first see after logging into your Rampage Remote account. The Systems Message window shows your connection status. The Page Browser is what you will use to view your proofs.

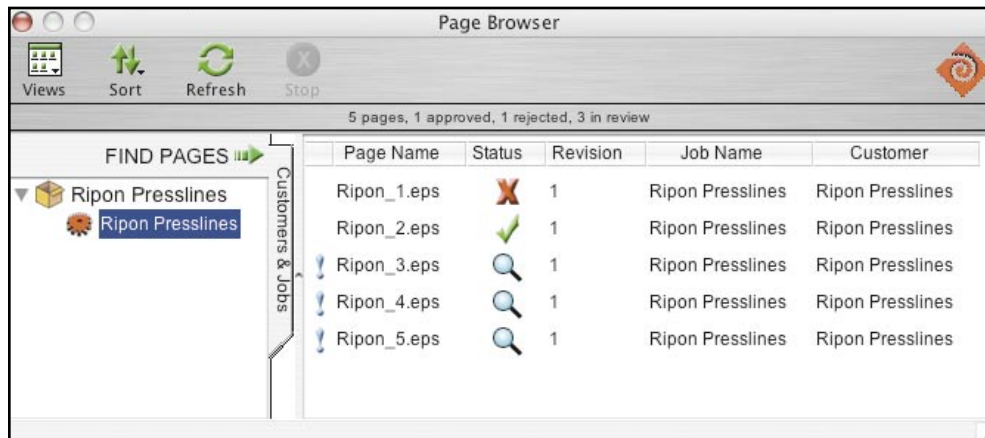


## 5.Using the Page Browser

The Page Browser shows you each project that is available for proofing. To view your proofs select the project you would like to view and press the Find Pages button.



After pressing the Find Pages button the Page Browser shows you the pages available for viewing, their status and how many revisions that they have had. To view a proof double-click on it and it will open up.



! — Shows that the page still needs your attention because it has not been approved or rejected.

✓ — Shows that the page has been approved.

X — Shows that the page has been rejected.

🔍 — Shows that the page is still under review.

## 6. Viewing Your Proof

**Shows Proof Status**

Revision 1 | 10% | 270° | X: 4088 Y: 3023

Rulers  Guides  Annotations

Rotates Page Views

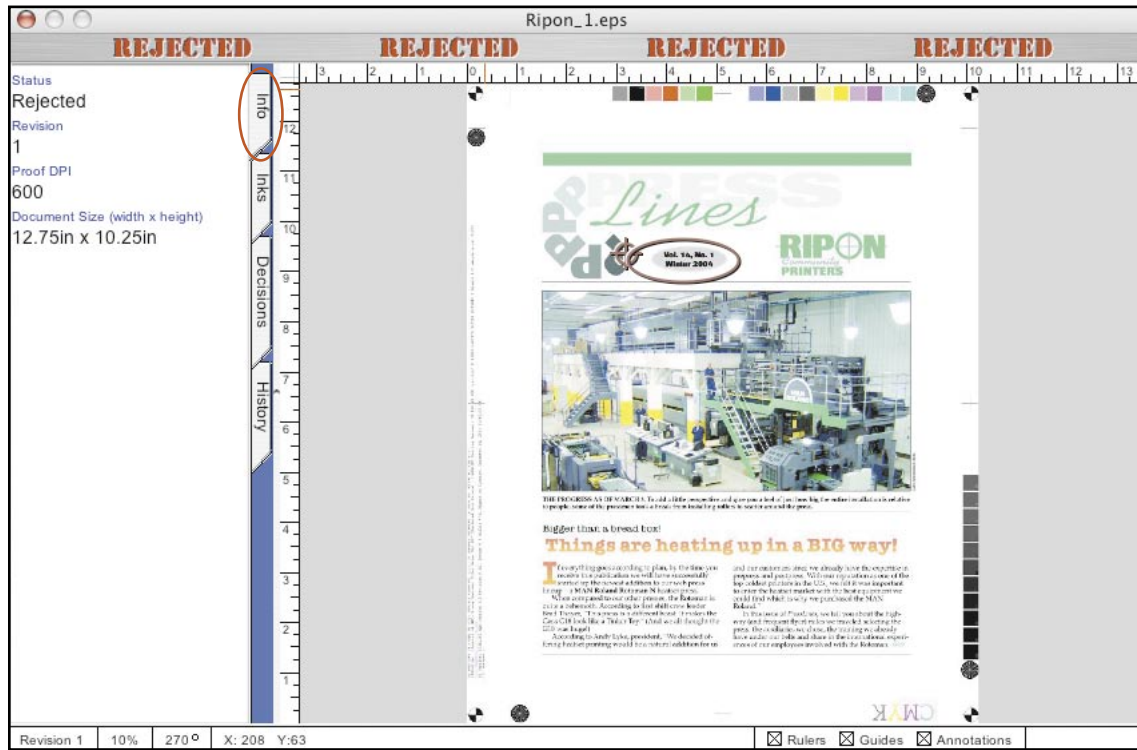
Changes Viewing Magnifications

Shows Page Revisions

Toggles on and off Rulers  
Guides and Annotations

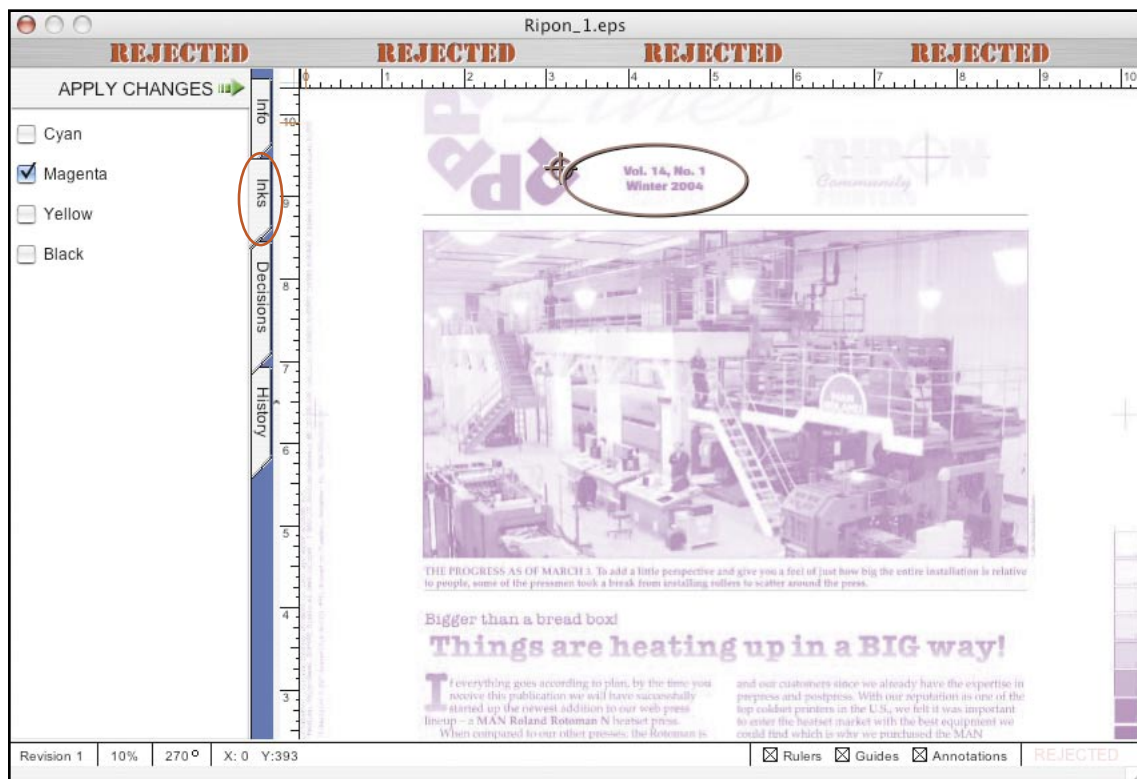
## 7. Info Palette

Shows general file information.



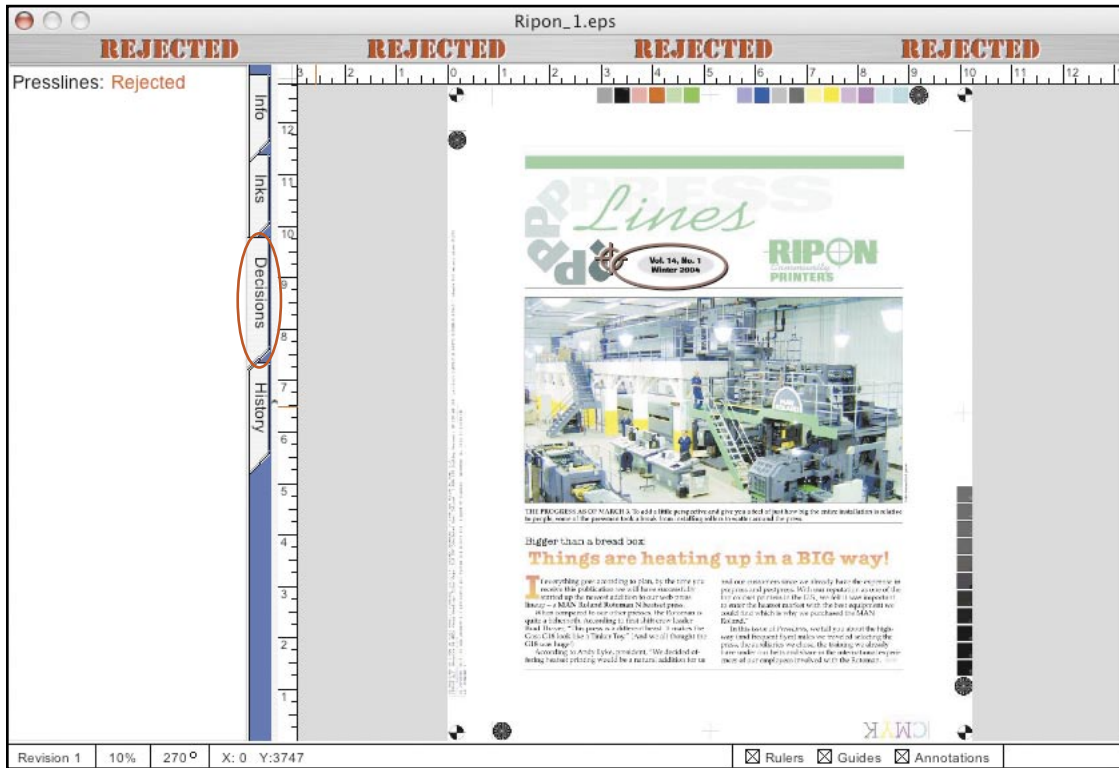
## 8. Inks Palette

Gives you the ability to turn on and off color plates so you can check things like overprints and knockouts.



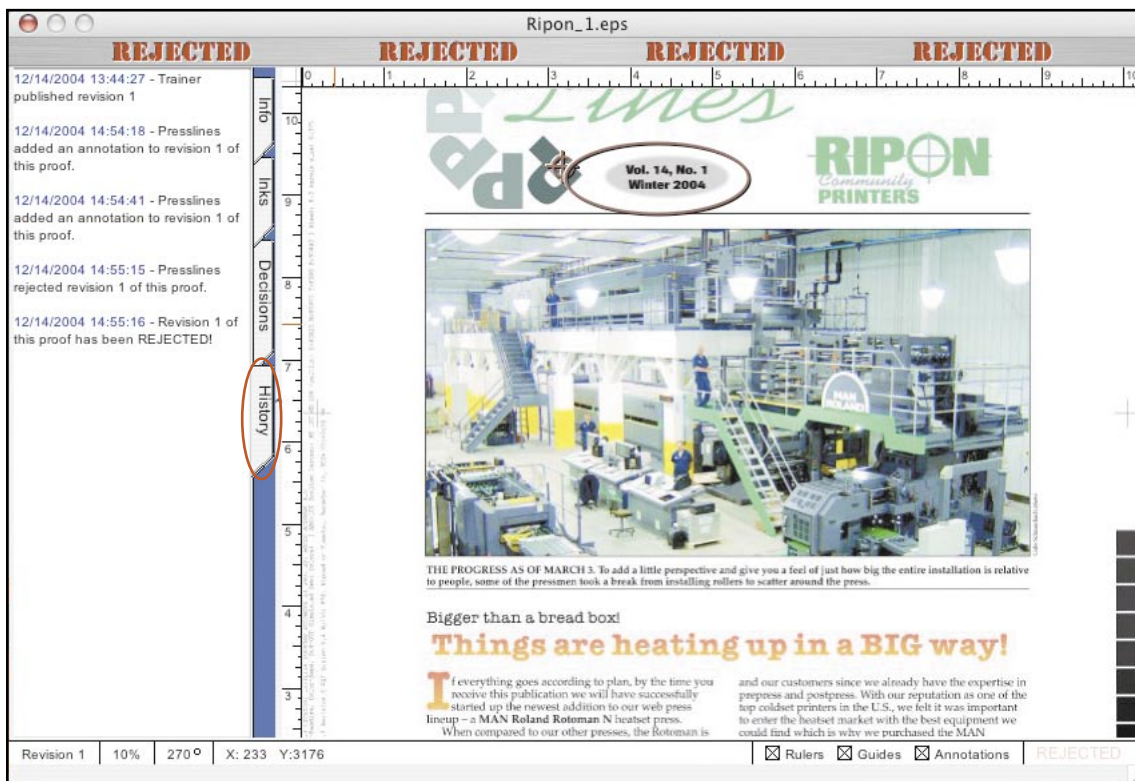
## 9. Decisions Palette

Shows who has accepted or rejected the proof.



## 10. History Palette

Shows the annotations that were made to the page as it went through the proofing cycle.



## 11. Tools Palette

Below is a brief description of the Rampage Remote tools. For more information see the Rampage Remote Users Guide available at [rampage.riponprinters.com](http://rampage.riponprinters.com)



Selection Tool- Selects, moves and expands annotations and is used to move guides.



Move Tool- Allows you to pan your view.



Densitometer Tool- Allows you to check ink colors.



Zoom Tool- Allows you to change your magnification levels.



Message Center- Flashes red when you have messages waiting for you.



Point Annotations- Creates an annotation on a particular spot.



Rectangle Annotations- Creates a rectangle annotation around an object.



Oval Annotations- Creates an oval annotation around an object.



Reject Button- Rejects the proof.



Approve Button- Approves the proof.